



SOIL ENGINEERING

SUPPORTING FACTUAL DATA

SECTION B

Laboratory Testing

**ENVIRONMENTAL AND
CHEMICAL RESULTS**



Amended Report

Report No.: 16-11737-4

Initial Date of Issue: 25-May-2016 **Date of Re-Issue:** 18-Jul-2016

Client: Soil Engineering Geoservices Ltd

Client Address: Unit 22 Biggar Road Industrial Estate
Cleland
Motherwell
Lanarkshire
ML1 5PB

Contact(s): Emily Birch

Project: TC7818 Westhill Landfills

Quotation No.: **Date Received:** 19-May-2016

Order No.: **Date Instructed:** 19-May-2016

No. of Samples: 8

Turnaround (Wkdays): 12 **Results Due:** 06-Jun-2016

Date Approved: 18-Jul-2016

Approved By:



Details: Glynn Harvey, Laboratory Manager
Martin Dyer, Laboratory Manager

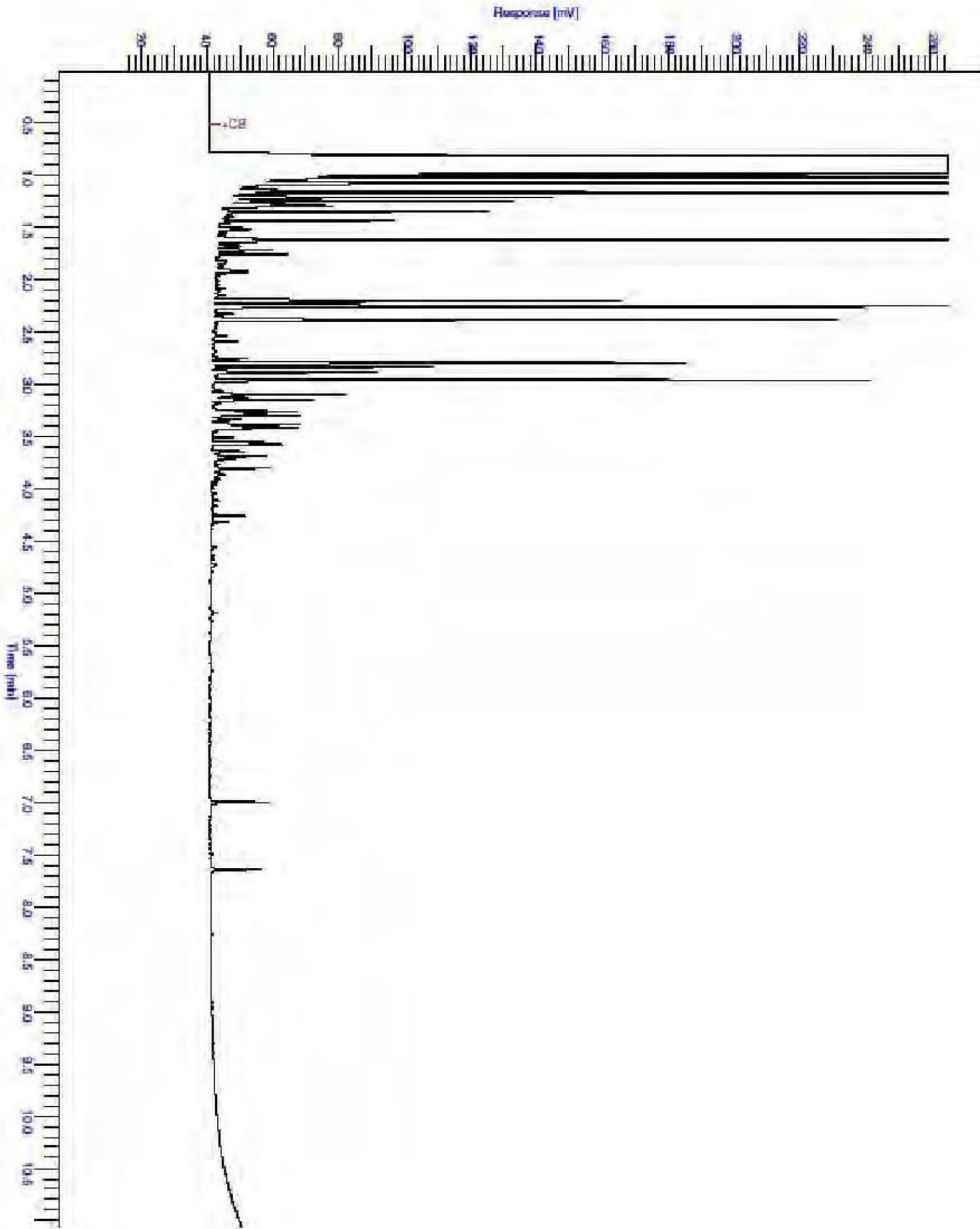
Results - Water

Client: Soil Engineering Geoservices Ltd	Chemtest Job No.:				16-11737	16-11737	16-11737	16-11737	16-11737	16-11737	16-11737	16-11737
Quotation No.:	Chemtest Sample ID.:				296563	296564	296565	296566	296567	296568	296569	296570
Order No.:	Client Sample Ref.:				1	1	1	1	1	1	1	1
	Client Sample ID.:				BH01	BH02	BH09	BH10	BH11	BH12	BH13	BH16
	Sample Type:				WATER	WATER	WATER	WATER	WATER	WATER	WATER	WATER
	Top Depth (m):				0.90	0.30	4.70	1.55	1.85	4.25	5.05	1.30
	Date Sampled:				16-May-2016	16-May-2016	16-May-2016	16-May-2016	16-May-2016	16-May-2016	16-May-2016	16-May-2016
Determinand	Accred.	SOP	Units	LOD								
Visual Assessment - Clarity	N			N/A				CLEAR			CLOUDY	
Visual Assessment - Colour	N			N/A				WHITE			YELLOW	
Visual Assessment - Magnetic Particles	N			N/A				N/A			N/A	
Visual Assessment - Settled Solids	N			N/A				SIGNIFICANT			SIGNIFICANT	
Chromatogram (TPH)	N			N/A				See Attached			See Attached	
Colour	N	1050	Hazen unit	1.0				35			89	
Odour	N	1070		N/A				STRONG			STRONG	
Chemical Oxygen Demand	U	1100	mg O2/l	10	83	29	38	31	10	63	350	19
Chloride	U	1220	mg/l	1.0	22	83	30	78	59	73	150	170
Ammoniacal Nitrogen	U	1220	mg/l	0.010	6.1	0.33	0.30	0.23	0.33	2.2	19	0.55
Fuel Type	N	1670		N/A				Gasoline			Diesel	
Aliphatic TPH >C5-C6	N	1675	µg/l	0.10	< 0.10	< 0.10	< 0.10	< 0.10	< 0.10	< 0.10	< 0.10	< 0.10
Aliphatic TPH >C6-C8	N	1675	µg/l	0.10	< 0.10	< 0.10	< 0.10	740	< 0.10	< 0.10	100	< 0.10
Aliphatic TPH >C8-C10	N	1675	µg/l	0.10	< 0.10	< 0.10	< 0.10	380	< 0.10	< 0.10	4200	< 0.10
Aliphatic TPH >C10-C12	N	1675	µg/l	0.10	< 0.10	< 0.10	< 0.10	110	< 0.10	< 0.10	13000	< 0.10
Aliphatic TPH >C12-C16	N	1675	µg/l	0.10	< 0.10	< 0.10	< 0.10	8.6	< 0.10	< 0.10	31000	< 0.10
Aliphatic TPH >C16-C21	N	1675	µg/l	0.10	< 0.10	< 0.10	< 0.10	< 0.10	< 0.10	< 0.10	27000	< 0.10
Aliphatic TPH >C21-C35	N	1675	µg/l	0.10	< 0.10	< 0.10	< 0.10	< 0.10	< 0.10	< 0.10	8400	< 0.10
Aliphatic TPH >C35-C44	N	1675	µg/l	0.10	< 0.10	< 0.10	< 0.10	< 0.10	< 0.10	< 0.10	< 0.10	< 0.10
Total Aliphatic Hydrocarbons	N	1675	µg/l	5.0	< 5.0	< 5.0	< 5.0	1200	< 5.0	< 5.0	83000	< 5.0
Aromatic TPH >C5-C7	N	1675	µg/l	0.10	< 0.10	< 0.10	< 0.10	320	< 0.10	< 0.10	< 0.10	< 0.10
Aromatic TPH >C7-C8	N	1675	µg/l	0.10	< 0.10	< 0.10	< 0.10	2100	< 0.10	< 0.10	76	< 0.10
Aromatic TPH >C8-C10	N	1675	µg/l	0.10	< 0.10	< 0.10	< 0.10	5500	< 0.10	< 0.10	730	< 0.10
Aromatic TPH >C10-C12	N	1675	µg/l	0.10	< 0.10	< 0.10	< 0.10	1300	< 0.10	< 0.10	2600	< 0.10
Aromatic TPH >C12-C16	N	1675	µg/l	0.10	< 0.10	< 0.10	< 0.10	160	< 0.10	< 0.10	12000	< 0.10
Aromatic TPH >C16-C21	N	1675	µg/l	0.10	< 0.10	< 0.10	< 0.10	< 0.10	< 0.10	< 0.10	380	< 0.10
Aromatic TPH >C21-C35	N	1675	µg/l	0.10	< 0.10	< 0.10	< 0.10	< 0.10	< 0.10	< 0.10	780	< 0.10
Aromatic TPH >C35-C44	N	1675	µg/l	0.10	< 0.10	< 0.10	< 0.10	< 0.10	< 0.10	< 0.10	< 0.10	< 0.10
Total Aromatic Hydrocarbons	N	1675	µg/l	5.0	< 5.0	< 5.0	< 5.0	9400	< 5.0	< 5.0	16000	< 5.0
Total Petroleum Hydrocarbons	N	1675	µg/l	10	< 10	< 10	< 10	11000	< 10	< 10	100000	< 10

TPH Chromatogram on Water Sample: 296566

Chromatogram

Sample Name : 296566 wt1-16-11737 Sample #: 036 Page 1 of 1
FileName : T:\2016\GC22\May\WATER0675\WATER0675_A036.raw
Date : 06/09/2016 12:08:39 Time of Injection: 24/05/2016 03:46:14
Method : Start Time : 0.00 min End Time : 11.06 min Low Point : 15.00 mV High Point : 255.00 mV
Plot Offset: 15.00 mV Plot Scale: 200.0 mV



TPH Chromatogram on Water Sample: 296569

Chromatogram

Sample Name : 296569 wt1-16-11737 Sample #: 039 Page 1 of 1
FileName : T:\2016\GC22\May\WATER0675\WATER0675_A039.raw
Date : 16/07/2016 14:03:14 Time of Injection: 24/05/2016 04:37:45
Method :
Start Time : 6.00 min End Time : 11.06 min Low Point : -8.72 mV High Point : 993.88 mV
Plot Offset : -8.72 mV Plot Scale: 1003.6 mV

